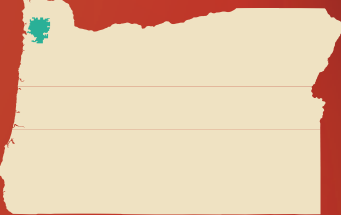


Tillamook
STATE FOREST



For More Information

If you're looking for more specific information on the Tillamook State Forest, pick up additional brochures at one of our district offices or click through our web site: www.oregon.gov/ODF/TSF/tsf.shtml

To get travel information in Oregon by phone, dial 511 or 1-800-977-6368 or check Oregon Department of Transportation's Trip Check web site: www.tripcheck.com

Forest Contact Information



Tillamook Forest Center
45500 Wilson River Highway
Tillamook OR 97141
(866) 930 - 4646
www.tillamookforestcenter.org

Tillamook District Office
5005 3rd Street, Tillamook, OR 97141
(503) 842 - 2545

Forest Grove District Office
801 Gales Creek Road
Forest Grove OR 97116
(503) 357 - 2191

Recorded Recreation Hot Line (503) 359-7402



Printed on recycled paper

3/08

Tillamook
STATE FOREST
Recreation Guide



Browns Camp Campground

Welcome to the
Tillamook State Forest

Explore a Coast Range forest, get closer to nature or discover the history of the legendary Tillamook Burn. Grab your gear and bring your family and friends to the Tillamook State Forest – it's all here. The forest is less than an hour drive from Portland or from Highway 101 on the coast.

Facilities Designed for
Your Forest Visit

Find a quiet picnic spot, a cool creek rippling over smooth stones, a family campsite, or a trail through the woods. We offer a variety of well-designed facilities to help you begin your fun in the forest. This recreation guide will help you find the right facility for your favorite forest activity.

The Tillamook State Forest offers a variety of campgrounds, including those designed for horse camping and off-highway vehicles (OHVs). Staging areas and trailheads provide places to park and unload equipment or horses so you can get out on the trail. You will find separate trails for motorized and non-motorized uses.

Day-use areas and highway waysides offer picnic sites and access to streams and paths. The Tillamook Forest Center invites you to visit and learn about the forest through programs, exhibits or friendly staff. It is a great place to start or end your Tillamook Forest adventure.



FACILITIES

- Campsites are available on a first-come, first-serve basis; no reservations.
- Fees per night:
 - drive-in campsites: \$10
 - walk-in campsites: \$5
 - extra vehicle: \$2
 - * Limit per site: 8 people/2 vehicles
 - ** Limit per site: 8 people/3 vehicles
- Collect dead and down campfire wood from outside developed facilities and only for your use on the forest.
- Campsite quiet hours are 10:00 PM-7:00 AM
- For the enjoyment and safety of others, please keep pets on a leash.

LEGEND

- | | |
|---------------------|---------------------|
| ADA Accessible | Horse Camping |
| Camping | Horse Trail |
| Undeveloped Camping | Scenic Viewpoint |
| Group Camping | Fishing |
| Restrooms | Mountain Bike Trail |
| Fee | Picnic Shelter |
| Drinking Water | OHV Staging Area |
| Picnic Site | Exhibit Information |
| Swimming | Hand Boat Launch |
| Hiking Trail | Telephone |
| Trailhead | Visitor Center |

Hikers enjoying the
Wilson River Trail

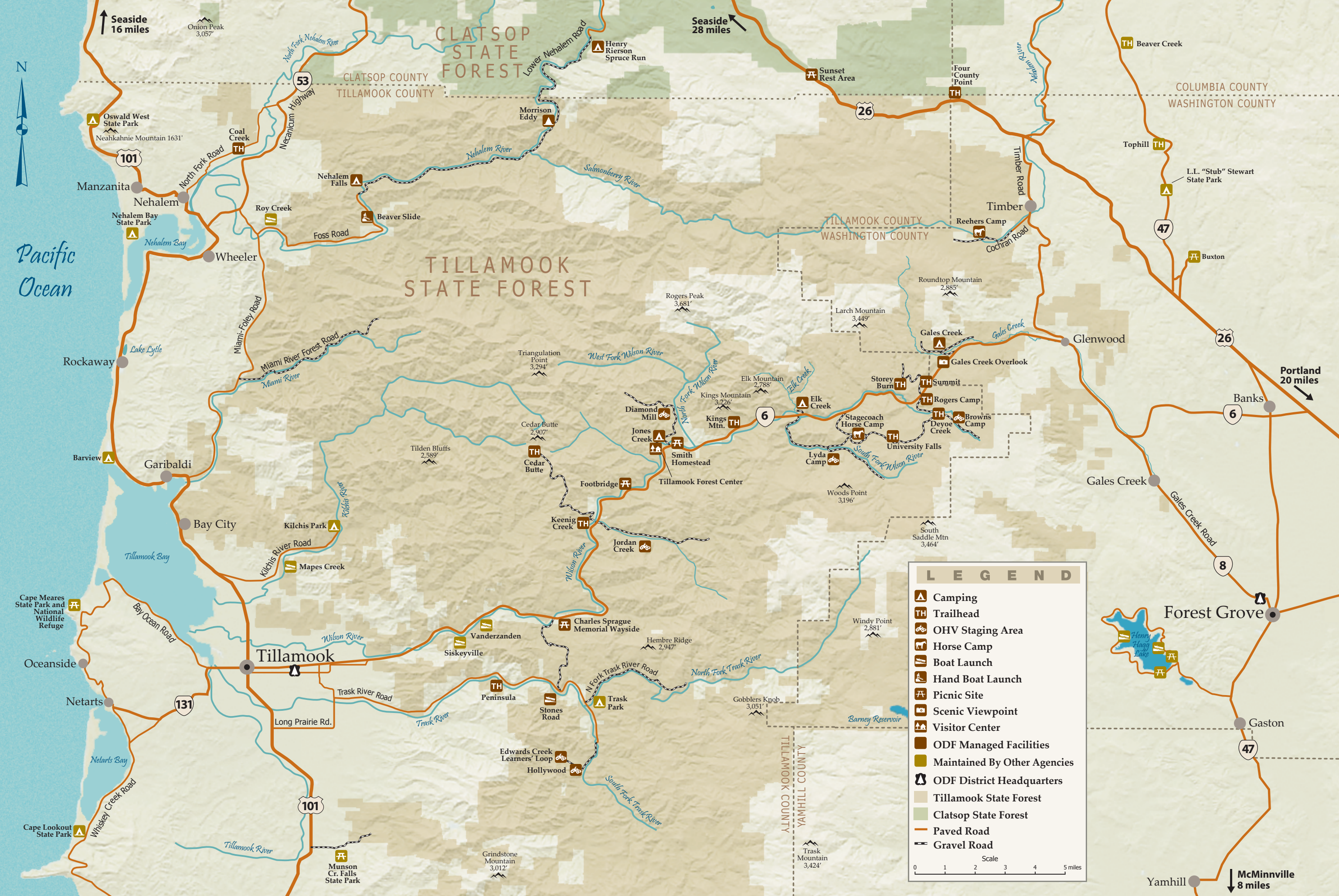
Smith Homestead
Forest Learning Shelter



Type of facility Camp Sites District Contact Open Season

CAMPGROUNDS

Elk Creek*	14	Forest Grove	Late May-Sept	
------------	----	--------------	---------------	--



Gales Creek Campground

Camping Fun for the Whole Family

Relax in a campsite shaded by a forest of Douglas-fir, western hemlock, and red alder. Most of our campgrounds are small and rustic. Individual campsites are well-screened and include a parking area for one or two vehicles, a table, a fire ring with cooking grill and a tent pad. These campsites may be just what you're looking for. While there are no RV hook-ups, many sites are suitable for travel trailers or small RVs. Some campgrounds have walk-in tent sites to get you a bit farther from the road. Jones Creek and Gales Creek campgrounds are popular family campgrounds that are easily reached off of Highway 6.

Browns Camp and Jordan Creek staging areas were developed specifically for off-highway vehicle use and camping. Reehers Camp was designed for horse campers, with a few non-horse campsites as well. No matter which campground you choose, you are never far from a stream or a trail. Camp hosts are generally available to provide helpful tips and information.

Some of the Best OHV Trails in the Region

Motorcycle, ATV and four-wheel drive trails are reached from five staging areas on the forest. OHV enthusiasts have over 150 miles of trails to choose from. Trails are rated from easy to difficult. Browns Camp is a good place for beginning riders and even offers a kids riding area.

If you like a more challenging ride, try Jordan Creek Staging Area. The Diamond Mill area offers difficult single-track motorcycle trails. Pick up a Tillamook State Forest OHV Guide for more details and a map of the designated OHV trail system.



Browns Camp Day-Use Area

Highway Waysides and Day-Use Picnic Sites

Day-use areas, highway waysides and scenic overlooks are located in campgrounds or along highways through the forest. They are free and offer shaded picnic sites, easy trails and most are close to a stream. The Smith Homestead and Jones Creek Day-Use areas are popular facilities located near the Wilson River off Highway 6 and have plenty of room for parking. The Forest Learning Shelter at the Smith Homestead offers a large rustic shelter that can be rented for private events.



Gales Creek Overlook

Non-motorized Trails

Enjoy a variety of over 60 miles of non-motorized trails on the Tillamook State Forest. Whether you prefer hiking, mountain biking or horseback riding trails, there is a trail here for you. Take an easy hike on the Peninsula Trail in the spring for a wildflower show. Pedal your mountain bike on the Historic Hiking Trail for a rocking good ride. If you're looking for a steep climb to a mountain-top with inspiring views, tackle the Kings Mountain Trail. Some trails may be closed seasonally to protect them from damage. Remember to "Share the Trail" and abide by posted signs that display the type of use allowed. A series of detailed trail guides are available at district offices, the Tillamook Forest Center and on our websites.



Gravelle Brothers Trail

Driving Forest Roads

There are hundreds of miles of maintained forest roads to explore, but drivers should be aware that single-lane gravel roads require more caution and slower speeds. Carry a forest map, water, check your spare tire and be alert for log trucks and other vehicles. Stay to the right and expect a vehicle around every corner.



The Tillamook Forest Center

You are sure to have fun while you learn about the forest through hands-on exhibits and family-friendly activities. Enjoy the scenery from the suspension bridge over the Wilson River. Climb the fire lookout tower for a birds-eye view of the site. Walk the trails of the demonstration forest or watch the award-winning film *Legacy of Fire*.

Weather and Fire Safety

Weather on the forest is highly variable depending on season. Late fall through early spring brings buckets of rain that can add up to over 100 inches a season. Snowfall occurs irregularly, but can accumulate significantly in the higher elevations. Summer through early fall is mostly dry and warm, however don't be surprised by an occasional shower.

Fire season is declared when forest conditions and weather raise the risk of wildfire. As fire danger increases, restrictions on activities like building campfires and off-road riding may be implemented. Always check and follow fire regulations during fire season. Never leave a campfire unattended and be sure it is cold before leaving the site.